

VALVE SPECIFICATION SHEET

SITE:
REF:
QTY:



EXPRESS VALVE SERVICES LIMITED

UNITS 18/19 THE WALLOWS INDUSTRIAL ESTATE - DUDLEY ROAD - BRIERLEY HILL - WEST MIDLANDS - DY5 1HR

PAGE T06

Tel: 01384 263872
Fax: 01384 480148
e-mail: sales@expressvalves.co.uk
Web: www.express-valves.co.uk

Due to our continuous product development policy we reserve the right to modify designs or dimensions

VALVE TYPES

- SEALS:
- ☐ GATE VALVES

☐ BUTTERFLY VALVES

☐ ECCENTRIC PLUG VALVES

☐ KNIFE GATE VALVES
- ☐ GUNMETAL

☐ EPDM

☐ NITRILE
- ☐ EPDM

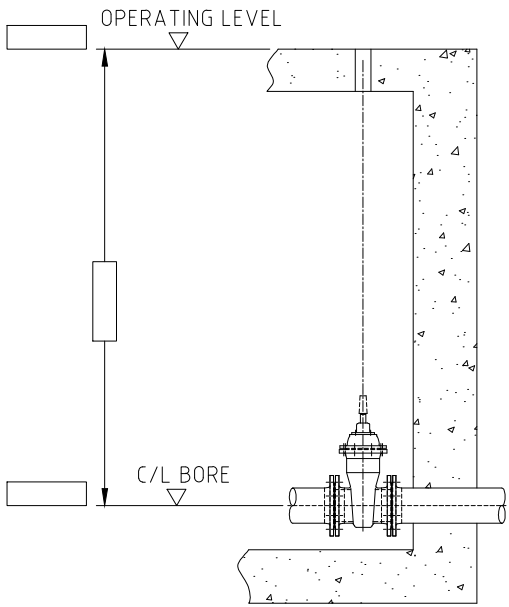
☐ NITRILE

OPERATING CONDITIONS:

MAX. OPERATING PRESSURE BAR

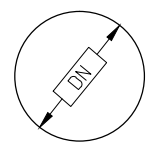
DIFFERENTIAL PRESSURE BAR

ESSENTIAL FOR ACTUATOR SIZE SELECTION

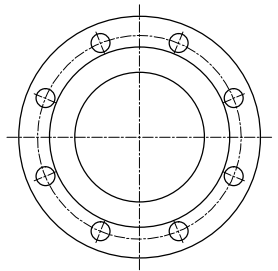


A

SIZE & FLANGE RATING



DN



FLANGE DESIGNATION

- METRIC
- ☐ PN10

☐ PN16

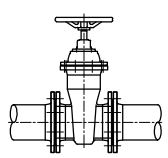
☐ PN25
- IMPERIAL
- ☐ BST 'D'

☐ BST 'E'

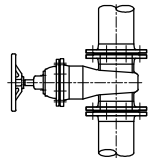
B

C

VALVE ORIENTATION



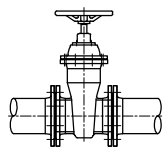
☐ HORIZONTAL PIPELINE



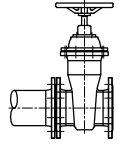
☐ VERTICAL PIPELINE

D

VALVE LOCATION



☐ 'FIXED' IN PIPELINE



☐ TERMINAL LOCATION

E

DIRECTION OF CLOSING

- ☐ CLOCKWISE
- ☐ ANTI-CLOCKWISE

F

MEDIA


- ☐ CLEAN WATER
- ☐ WASTE WATER
- ☐ SEWAGE
- ☐ AIR

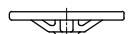
G

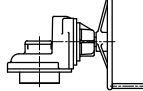
SPECIAL FEATURES

H


OPERATING EQUIPMENT:

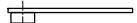
- 

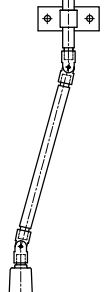



- ☐ CAP

☐ HANDWHEEL

☐ GEARBOX
- 

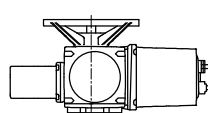


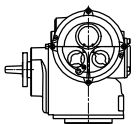

- ☐ LEVER OPERATION

☐ SINGLE OFF-SET

☐ DOUBLE OFF-SET

☐ UNIVERSAL JOINT

☐ ELECTRIC ACTUATOR - REFER OPERATING CONDITIONS
- 



☐ OPEN/CLOSE

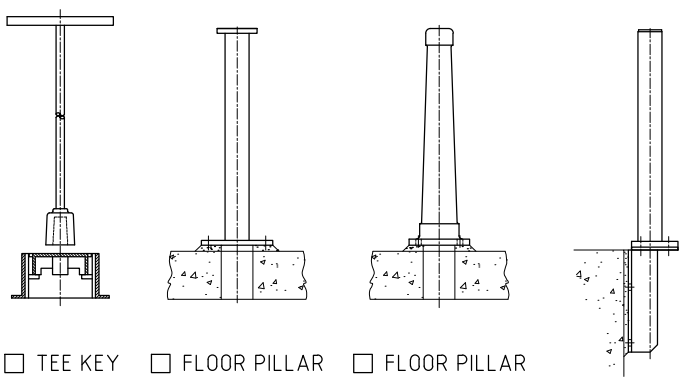
☐ MODULATING

POWER SUPPLY
- ☐ MULTI-TURN

☐ QUARTER-TURN

I

OPERATOR MOUNTING:



- ☐ TEE KEY
- ☐ FLOOR PILLAR (FABRICATED)
- ☐ FLOOR PILLAR (CAST IRON)
- ☐ COPING BRACKET

- 
- ☐ MOUNTED DIRECT

J